

**BOARD OF TRUSTEES**  
**REGULAR MEETING MINUTES**

Tuesday, November 10, 2020, 6:30 p.m. Open Session (closed session 5:30 p.m.)  
**Rescue District Office Board Room**

In response to the COVID-19 pandemic, Governor Newsom issued Executive Order N-29-20, which temporarily suspends provisions of the Brown Act relating to public meetings.

The Public’s health and well-being are the top priority for the Board of Trustees of the Rescue Union School District and you are urged to take all appropriate health safety precautions. To facilitate this process, 2 options were offered to participate in the open session meeting Via Zoom or in person attendance following social distancing guidelines.

**DISTRICT MISSION**

Rescue Union School District, in partnership with families and the community, is dedicated to the success of every student by providing a challenging, comprehensive, and quality education in a safe environment in which all individuals are respected, valued, connected, and supported.

| ITEM                             | ITEM DESCRIPTION  |
|----------------------------------|---|
| <b>CALL TO ORDER:</b>            | Board president called the meeting to order a 5:30 p.m.   |
| <b>ROLL CALL:</b>                | <ul style="list-style-type: none"> <li>✓Kim White, President</li> <li>✓Stephanie Kent, Vice President</li> <li>✓Tagg Neal, Clerk</li> <li>✓Nancy Brownell, Member</li> <li style="padding-left: 20px;">Suzanna George, Member</li> <li>✓Cheryl Olson, Superintendent and Board Secretary</li> <li>✓Sean Martin, Assistant Superintendent of Business Services</li> <li>✓Dave Scroggins, Assistant Superintendent of Curriculum and Instruction</li> </ul> |
| <b>PUBLIC COMMENT:</b>           | There were no comments concerning items on the Closed Session Agenda.   |
| <b>CLOSED SESSION:</b>           | The Board adjourned to closed session to discuss matters of personnel, security, negotiations, student discipline, litigation, or other matters as authorized by Government Code Sections 3549.1, 54956.9, 54956.8, 54957, and 54957.6 and Education Code Sections 35146 and 48918.   |
| Conference with Labor Negotiator | Discussion with the District’s designated negotiators, Dave Scroggins and Sean Martin, regarding directions and issues in negotiations with Rescue Union Federation of Teachers (RUFT), California School Employees Association (CSEA), Confidential Staff, and Administrative Management.  |
| <b>OPEN SESSION:</b>             | Reconvened open session in the Board Room at 6:30 p.m.  |
| Welcome                          | <p>The Board president provide an introduction to Board meeting proceedings and welcomed newly elected Board Member, Michael Gordon.</p> <p>Mr. Gordon thanked the community for participating in the election process. He stated he felt blessed to have been selected and is excited to work with the Board, District and staff. Mr. Gordon also thanked Stephanie Kent for her service and commitment to the students of Rescue Union.</p>             |

|   |   |
|---|---|
| Flag Salute   | The Board President led the flag salute.  |
| 1. Adoption of Agenda<br>(Consideration for Action) | Trustee Brownell moved and Trustee Neal seconded to approve the agenda as presented. The motion passed 4-0.<br>Roll Call Vote:<br>Ayes: Trustee Kent, Brownell, Neal and Kent   |
| <b>STUDENT SUCCESS / RECOGNITION:</b>               |   |
| Lake Forest Elementary School                       | Lake Forest principal, Bruce Peters provide a site update and honored Alyssa Pierce, Teacher and Sandra de Anquin, Student Services Secretary as the recipients of the Difference Maker Award.  |
| <b>REPORTS AND COMMUNICATION:</b>                   |   |
| Report from Closed Session                          | The Board president reported no action taken in closed session.   |
| 2. Superintendent's Report<br>(Supplement)          | <p>The Superintendent and Board honored Stephanie Kent who has served as a member on the Board of Trustees since 2016. Trustee Kent was described as having a genuine passion for students, students with special needs, for music, fine arts and also for the advancement of technology and coding for all students. She believes in supporting teachers and staff, because she knows what it is like to be in the classroom, having spent many years as a substitute in our district. She has put in countless hours to visit classrooms, schools, and attending events. She has volunteered to support parent club activities and help out in classrooms, and was also an active member in parent clubs and booster clubs when her own children attended Rescue Union.</p> <p>In addition, Trustee Kent was considered by everyone to be a valuable asset to the RUSD Board. Her connection to the community, passion for students, thorough preparation for meetings that included thoughtful questions that gave all members a better understanding of the issues presented, and the ability to be a great listener which allowed our community to feel heard, are all qualities that will be missed. Her commitment to serving students and staff is commendable.</p> <p>Trustee Kent shared it has been a privilege and an honor to work with everyone in the district. She commented that she has absolute faith in our students, parents, staff, and leaders to continue working through the challenges we face and will continue to face. She said she was proud to have accomplished the goals that she wanted to see for our district as part of the Board. Trustee Kent stated that she believed in humanity more because of her position on the Board, and finished by saying she was confident the Board would be able to continue to move forward and do what our students need during these difficult times.</p> |
| <b>PUBLIC COMMENTS:</b>                             | There were no public comments for items not on the agenda.  |

|   |   |
|---|---|
| <b>GENERAL:</b>   |   |
| <p>3. Annual Organizational Meeting –<br/>Select Date and Time</p> <p>(Supplement)</p> <p>(Consideration for Action)<br/>Superintendent</p> | <p>Education Code Sections 35143 and 5017 requires the governing board of each school district shall hold an annual organizational meeting. This year the 15-day window period, established by statute, to hold the Annual Organizations meeting begins on Friday, December 11, 2020 and runs through Friday, December 25, 2020. The Education Code provides that the Board at its regular meeting held immediately prior to December 11 shall select the day and time of the annual meeting. District administration recommends the annual organizational meeting take place at the regular Board meeting on December 15, 2020 at 6:30 p.m.</p> <p>Trustee Brownell moved and Trustee Neal seconded to select December 15, 2020 Regular Board meeting at 6:30 p.m. as the annual organization meeting. The motion passed 4-0</p> <p>Roll Call Vote:<br/>Ayes: Trustee Kent, Brownell, Neal and White</p>   |
| <p>4. CSBA Delegate Assembly<br/>Nomination</p> <p>(Supplement)</p> <p>(Consideration the Action)<br/>Superintendent</p>                    | <p>The Board considered nominations for the CSBA delegate assembly opening in Region 6. Each Board may nominate as many individuals as it chooses. All nominees must serve on a CSBA member board. Each delegate serves a two-year term.</p> <p>Trustee Brownell nominated Trustee Suzanna George for the Delegate Assembly opening in Region 6. Trustee Neal seconded the motion. The motion carried 4-0.</p> <p>Roll Call Vote:<br/>Ayes: Trustee Kent, Brownell, Neal and White</p>  |
| <p>5. COVID Update</p> <p>(Supplement)</p> <p>(Information Only)<br/>Superintendent</p>   | <p>The Board will receive an update on COVID mitigations.</p> <p>Superintendent Olson reported that we have just concluded our first trimester providing both the hybrid model and the Frontier Academy, with only 6 positive COVID cases in our district. We have only had to quarantine 4 small cohorts of students because our health and safety protocols are well established and everyone from staff to families are taking our protocols seriously and it is making a difference.</p> <p>Surveillance testing is underway. Every staff member has had at least one opportunity to be tested to date.</p> <p>Assistant Superintendent, Sean Martin shared with the Board some of the additional safety protocols/practices that we will be implementing for the fuller return model in January. All of the practices currently in place will continue as well as some additional pieces to include: air scrubbers for gymnasiums (large units mounted on wheels that can be moved to various locations), the purchase of additional self-contained sinks with existing inventory moved to covered locations for inclement weather, completed installation of wall mounted hand sanitizers in every room, and looking at tents to be used to provide additional space with more students on campuses.</p> <p>Superintendent Olson also shared information with the Board regarding the middle school schedules during Phase 2 reopening plan and the struggle on how to balance the size of the cohorts for lunches due to space issues. One option to consider includes the</p> |

elimination of the lunch period with instructional programs running straight through the morning, and a snack break in the middle. This would minimize cohort mixing during January and February, as the regular lunch period would not occur, and provide adequate time between periods to disinfect classrooms. This would additionally allow the evening custodians to come in early to begin disinfecting and yard duty personnel could be redeployed to assist with the cleaning. Students would receive a grab and go lunch and breakfast and we would not have to navigate the large cohorts in one place during lunch. This would help ensure our health and safety protocols can be maintained. The instructional time remains intact, but the lunch period would not occur.

Public Comments were heard from:

|  |  |
|--|--|
| <p>Levi Cambridge<br/>Marina Village Principal</p>             | <p>He stated that Superintendent Olson illustrated some of the challenges faced at the middle school and said they are continually having conversations to creatively solve some of these issues. Principal Cambridge indicated that he and Vera Morris, Pleasant Grove Principal would be happy to answer any questions the Board might have.</p>   |
| <p>Samantha Schlesinger<br/>Marina Village, Asst Principal</p> | <p>Commented that space is a big part of the challenge, but additionally both staff and parents, have concerns and/or may not feel comfortable with larger numbers of students and removing face coverings to eat.</p>   |
| <p>Carol Wahl<br/>Parent</p>                                   | <p>Initially was not in favor of no lunch. However, when discussing with her 2 middle school students, they indicated no lunch made more sense. Their family gives a thumbs up to the grab/go lunch option.</p>  |
| <p>Laurisa Stuart<br/>RUFT President</p>                       | <p>Provided the teachers perspective. They are in favor of the grab and go option, and to not have the lunch scheduled because of the logistical issues. They feel the grab/go lunch is a positive. She also commented on the fact that the students currently in the AM or PM program will be able to socialize with more of their classmates with everyone attending in the fuller day model. Also mentioned was the importance of keep students in class as much as possible, (due to quarantine) to keep them from missing out academically.</p> |
| <p>Michael Gordon<br/>Board Member Elect</p>                   | <p>Comments regarding how important mental health is for students as well as academics. Suggested that perhaps considering two 14 minute breaks in place of the lunch. Still allowing for that social interaction, and still adhering to guidelines as well as maintaining the schedule for families.</p>  |

|   |   |  |         |                                       |                  |  |                    |  |              |                              |         |                      |                                 |                        |
|---|---|--|---------|---------------------------------------|------------------|--|--------------------|--|--------------|------------------------------|---------|----------------------|---------------------------------|------------------------|
|   | <p>Erin Koht<br/>Teacher</p>  | <p>As a teacher, appreciates having students back for in person instruction, and as a parent of a middle school student truly appreciates the transition to have the full cohorts back together. So even with just a 14 minute break, still much better off socially and emotionally having all the friends back instead of just half (AM/PM) of the group</p> |         |                                       |                  |  |                    |  |              |                              |         |                      |                                 |                        |
| <p>6. Board Policy Updates<br/>(Supplement)<br/><br/>(First Reading and Possible Consideration for Action)<br/>Superintendent</p> | <p>The Board continued discussion regarding the advantages and disadvantages of not providing the full lunch period. Questions and comments were heard from the members regarding the benefit for students to have the opportunity to engage with their peers during lunch and how to operationally/logistically keep the students distanced. Concerns were shared about the social emotional well-being of students and the value of socialization during lunch as well as possible schedule issues for families. There was also discussion regarding the extra expenses, resources and staff needed to be able to provide the lunch period safely and the timeframe to implement.</p> <p>Middle school principals contributed to the discussion sharing that they too agreed about the social emotional aspect for students. However, with the fuller day model, a slower start in January/February with the grab and go lunch could be helpful easing students back into the schedule. Also challenges with the supervised, but unstructured time, at lunch and the additional time needed for thorough disinfecting. Contact tracing would be more difficult as cohorts would be mixed, and potentially causing more missed school for students.</p> <p>This item will be brought back for further consideration.</p> <p>Periodically, the Board reviews, revises and/or adopts Board Policy. The following policies are provided for first reading and possible consideration for action.</p> <table border="1" data-bbox="651 1297 1430 1583"> <tr> <td>BP 0460</td> <td>Local Control and Accountability Plan</td> </tr> <tr> <td>BP 0520<br/>ADOPT</td> <td>Intervention for Underperforming Schools</td> </tr> <tr> <td>BP 0520.1<br/>ADOPT</td> <td>Comprehensive and Targeted Support for Improvement</td> </tr> <tr> <td>BP/AR 1312.3</td> <td>Uniform Complaint Procedures</td> </tr> <tr> <td>AR 3514</td> <td>Environmental Safety</td> </tr> <tr> <td>BP/E 4112.9<br/>4212.9<br/>4312.9</td> <td>Employee Notifications</td> </tr> </table> <p>Trustee Brownell moved and Trustee Neal seconded to approve the revisions and adopt the new policies listed, as presented. The motion passed 4-0.<br/>Roll Call Vote:<br/>Ayes: Trustee Kent, Brownell, Neal and White</p> |  | BP 0460 | Local Control and Accountability Plan | BP 0520<br>ADOPT | Intervention for Underperforming Schools | BP 0520.1<br>ADOPT | Comprehensive and Targeted Support for Improvement | BP/AR 1312.3 | Uniform Complaint Procedures | AR 3514 | Environmental Safety | BP/E 4112.9<br>4212.9<br>4312.9 | Employee Notifications |
| BP 0460   | Local Control and Accountability Plan   |  |         |                                       |                  |  |                    |  |              |                              |         |                      |                                 |                        |
| BP 0520<br>ADOPT  | Intervention for Underperforming Schools  |  |         |                                       |                  |  |                    |  |              |                              |         |                      |                                 |                        |
| BP 0520.1<br>ADOPT  | Comprehensive and Targeted Support for Improvement  |  |         |                                       |                  |  |                    |  |              |                              |         |                      |                                 |                        |
| BP/AR 1312.3  | Uniform Complaint Procedures  |  |         |                                       |                  |  |                    |  |              |                              |         |                      |                                 |                        |
| AR 3514   | Environmental Safety  |  |         |                                       |                  |  |                    |  |              |                              |         |                      |                                 |                        |
| BP/E 4112.9<br>4212.9<br>4312.9   | Employee Notifications  |  |         |                                       |                  |  |                    |  |              |                              |         |                      |                                 |                        |
| <p><b>PERSONNEL:</b></p>  |   |  |         |                                       |                  |  |                    |  |              |                              |         |                      |                                 |                        |
| <p>7. Openers for RUFT Negotiations<br/>2021-2022</p>   | <p>The Board is required to set a date for public comment on collective bargaining unit openers for the upcoming session. District administration recommends that Rescue Union Federation of</p>  |  |         |                                       |                  |  |                    |  |              |                              |         |                      |                                 |                        |

|  |   |
|--|---|
| <p>(Supplement)</p> <p>(Consideration for Action)</p> <p>Assistant Superintendent of Business Services</p>   | <p>Teachers (RUFT) negotiation openers be put on the agenda for the December 15, 2020 regular Board meeting for public comment.</p> <p>Trustee Brownell moved and Trustee Neal seconded to set the date for public comment on RUFT openers, for the December 15, 2020 regular Board meeting. The motion passed 4-0.</p> <p>Roll Call Vote:<br/>Ayes: Trustee Kent, Brownell, Neal and White</p>   |
| <p><b>BUSINESS AND FACILITIES ITEMS:</b></p>   | <p>These items are provided for Board information, discussion, and/or action.</p>   |
| <p>8. District Response to PG&amp;E Public Safety Power Shutoff (PSPS)</p> <p>(Supplement)</p> <p>(Discussion Only)</p> <p>Assistant Superintendent of Business Services</p> | <p>The Board will receive information regarding what options and solutions are available for future PSPS events.</p> <p>Assistant Superintendent of Business Services reported on possible options regarding the potential purchase of a generator that allow the district to be self-sufficient during PSPS events. Additionally, other options including battery systems, solar, and energy efficiencies were reviewed.</p> <p>After discussion, the Board gave direction to administration to move forward with the process for proposals/quotes to review our systems for energy savings.</p>   |
| <p>9. Budget Advisory Committee Update</p> <p>(Supplement)</p> <p>(Information Only)</p> <p>Assistant Superintendent of Business Services</p>                                | <p>The Board will receive an update on the Budget Advisory Committee.</p> <p>Superintendent Olson provided an update on the development of the Budget Advisory Committee.</p> <p>The committee will be established during the fall of 2020 and meet throughout the 20-21 school year, with the intent for the Board of Trustees to discuss, approve and adopt a budget reduction plan to be put in place for the 2021-2022 school year. The committee's input will be made by looking at the goals and actions established within the district's LCAP. The goal is to be able to present possible budget reductions to the Rescue Union Board of Trustees by February 2021 Study Session so that the possibilities can be discussed, revised, and then a plan determined by the Board and subsequently approved and adopted at the regular March Board meeting to be put in place for the 2021-2022 school year and beyond.</p> |
| <p><b>CONSENT AGENDA:</b></p> <p>(Consideration for Action)</p>  | <p>All matters listed under Consent Agenda are considered to be routine or sufficiently supported by prior or accompanying reference materials and information as to not require additional discussion. A motion as referenced below will enact all items.</p> <p>Item #15 was pulled for discussion.</p> <p>Trustee Brownell moved and Trustee Kent seconded to approve the Consent Agenda as presented. The motion passed 4-0.</p> <p>Roll Call Vote:<br/>Ayes: Trustee Kent, Brownell, Neal and White</p>  |
| <p>10. Board Meeting Minutes</p> <p>(Supplement)</p>   | <p>Minutes of October 13, 2020 Regular Board Meeting.</p>   |



|                                       |  |
|---------------------------------------|--|
| <p>16. Donations<br/>(Supplement)</p> | <p>The Board and District appreciate and accept the following donations:</p> <p><u>Rescue Union School District</u></p> <ul style="list-style-type: none"> <li>- Donation from Guardians of the Angeles for personal protective equipment for COVID-19 prevention and/or control.</li> </ul> |
| <p><b>ADJOURNMENT:</b></p>            | <p>Trustee Kent moved to adjourn the meeting at 8:59 p.m., Trustee Neal seconded the motion.</p>   |



015 RESCUE UNION SCHOOL DISTRICT J46691  
0026 10\_30\_2020 LQ

ACCOUNTS PAYABLE PRELIST  
BATCH: 0026 0026 10\_30\_2020 LQ

APY500 L.00.19 10/28/20 16:34 PAGE 10  
<< Held for Audit >>

| Vendor/Addr<br>Req Reference | Remit name<br>Date | Description | Tax ID num | Deposit type<br>FD RESC Y OBJT GOAL FUNC LC1 LOC2 L3 SCH T9MPS | ABA num | Account num | EE ES<br>Liq Amt | E-Term<br>Net | E-ExtRef<br>Amount |
|------------------------------|--------------------|-------------|------------|--|---------|-------------|------------------|---------------|--------------------|
|------------------------------|--------------------|-------------|------------|--|---------|-------------|------------------|---------------|--------------------|


|                        |  |  |  |  |           |      |      |  |           |
|------------------------|--|--|--|--|-----------|------|------|--|-----------|
| TOTAL DISTRICT PAYMENT |  |  |  |  | 98,969.74 | **** | 0.00 |  | 98,969.74 |
|------------------------|--|--|--|--|-----------|------|------|--|-----------|

|                          |  |  |  |  |           |      |      |  |           |
|--------------------------|--|--|--|--|-----------|------|------|--|-----------|
| TOTAL FOR ALL DISTRICTS: |  |  |  |  | 98,969.74 | **** | 0.00 |  | 98,969.74 |
|--------------------------|--|--|--|--|-----------|------|------|--|-----------|

Number of checks to be printed: 57, not counting voids due to stub overflows. 98,969.74



Pursuant to Rescue Union School District Policy, the El Dorado County Superintendent of Schools is hereby authorized and directed to issue individual warrants to the payees named hereon

  
District Designee

10/29/20  
Date

| Vendor/Addr<br>Req Reference | Remit name<br>Date | Description | Tax ID num | Deposit type<br>FD RESC Y OBJT | ABA num<br>GOAL FUNC | Account num<br>LC1 LOC2 L3 SCH T9MPS | EE<br>Liq Amt | ES<br>E-Term | E-ExtRef<br>Net Amount |
|------------------------------|--------------------|-------------|------------|--------------------------------|----------------------|--------------------------------------|---------------|--------------|------------------------|
| TOTAL PAYMENT AMOUNT         |                    |             |            |                                |                      | 80.00 *                              |               |              | 80.00                  |

000222/00 SCHOLASTIC INC

|                      |            |                     |  |  |  |   |  |  |        |
|----------------------|------------|---------------------|--|--|--|---|--|--|--------|
| PV-210283            | 10/30/2020 | INV M7033286 S NEWS |  |  |  | 01-9428-0-4300-1110-1000-028-9000-98-000 NN |  |  | 236.66 |
| PV-210283            | 10/30/2020 | INV M7034291 S NEWS |  |  |  | 01-9428-0-4300-1110-1000-028-9000-98-000 NN |  |  | 229.02 |
| TOTAL PAYMENT AMOUNT |            |                     |  |  |  | 465.68 *                                    |  |  | 465.68 |

101193/00 STAPLES ADVANTAGE

|                      |           |            |            |  |  |   |  |      |      |
|----------------------|-----------|------------|------------|--|--|---|--|------|------|
| 215211               | PO-210148 | 10/28/2020 | 3460251619 |  |  | 1 01-0000-0-4300-0000-7200-080-0000-00-000 NN P |  | 8.11 | 8.11 |
| TOTAL PAYMENT AMOUNT |           |            |            |  |  | 8.11 *  |  |      | 8.11 |

105011/00 TEACHER SYNERGY LLC

|                      |           |            |           |  |  |   |  |       |        |
|----------------------|-----------|------------|-----------|--|--|---|--|-------|--------|
| 215113               | PO-210049 | 10/28/2020 | 132241909 |  |  | 1 01-1100-0-4300-1110-1000-027-0000-97-000 NY P |  | 18.20 | 18.20  |
| 215407               | PO-210387 | 10/29/2020 | 132405110 |  |  | 1 01-9421-0-4300-1110-1000-021-9000-91-000 NY P |  | 53.61 | 91.00  |
| TOTAL PAYMENT AMOUNT |           |            |           |  |  | 109.20 *  |  |       | 109.20 |

100001/00 VERIZON WIRELESS

|                      |           |            |                         |  |  |   |  |          |      |
|----------------------|-----------|------------|-------------------------|--|--|---|--|----------|------|
| 215411               | PO-210392 | 10/30/2020 | CLOSE PER KANDACE COVID |  |  | 1 01-7388-0-5901-1110-1000-120-8000-00-000 NN C |  | 3,623.88 | 0.00 |
| TOTAL PAYMENT AMOUNT |           |            |                         |  |  | 0.00 *  |  |          | 0.00 |

022495/00 WILLIAMSON, MICHELE

|                      |            |                                |  |  |  |   |  |  |        |
|----------------------|------------|--------------------------------|--|--|--|---|--|--|--------|
| PV-210282            | 10/30/2020 | SAC WOMENS LEAD SUMMIT WEBINAR |  |  |  | 01-1100-0-5200-0000-2700-021-0000-91-000 NN |  |  | 208.95 |
| TOTAL PAYMENT AMOUNT |            |                                |  |  |  | 208.95 *                                    |  |  | 208.95 |

|                          |                |      |           |
|--------------------------|----------------|------|-----------|
| TOTAL BATCH PAYMENT      | 39,176.89 ***  | 0.00 | 39,176.89 |
| TOTAL DISTRICT PAYMENT   | 39,176.89 **** | 0.00 | 39,176.89 |
| TOTAL FOR ALL DISTRICTS: | 39,176.89 **** | 0.00 | 39,176.89 |
|                          |                |      | 39,176.89 |

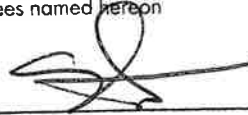
Number of checks to be printed: 12, not counting voids due to stub overflows.  
 Number of zero dollar checks: 4, will be printed.

Pursuant to Rescue Union School District Policy, the El Dorado County Superintendent of Schools is hereby authorized and directed to issue individual warrants to the payees named hereon :

*Cheryl Olson* 11/2/20  
 District Designer Date

| Vendor/Addr<br>Req Reference    | Remit name<br>Date           | Description | Tax ID num    | Deposit type<br>FD RESC Y OBJT GOAL | ABA num<br>FUNC                               | Account num<br>LC1 LOC2 L3 SCH T9MPS | EE<br>Liq Amt | ES<br>Amt      | E-Term | E-ExtRef<br>Net Amount |
|---------------------------------|------------------------------|-------------|---------------|-------------------------------------|---|--------------------------------------|---------------|----------------|--------|------------------------|
| 018904/00                       | SHERWIN WILLIAMS             |             |               |                                     |   |                                      |               |                |        |                        |
| 215089                          | PO-210073                    | 10/20/2020  | 0088-2        | 1                                   | 01-8150-0-4300-0000-8110-085-0000-00-000      | NN P                                 |               | 10.37          |        | 10.37                  |
| TOTAL PAYMENT AMOUNT            |                              |             |               |                                     |   |                                      |               | 10.37 *        |        | 10.37                  |
| 102326/00                       | SIERRA BUILDING SYSTEMS      |             |               |                                     |   |                                      |               |                |        |                        |
| 215091                          | PO-210071                    | 11/02/2020  | 10460 PG      | 1                                   | 01-8150-0-5610-0000-8110-085-0000-00-000      | NN P                                 |               | 1,041.91       |        | 1,041.91               |
| TOTAL PAYMENT AMOUNT            |                              |             |               |                                     |   |                                      |               | 1,041.91 *     |        | 1,041.91               |
| 101385/00                       | SITEONE LANDSCAPE SUPPLY LLC |             |               |                                     |   |                                      |               |                |        |                        |
| 215099                          | PO-210061                    | 10/06/2020  | 103033826-001 | 1                                   | 01-0000-0-4300-0000-8210-084-0000-00-000      | NN P                                 |               | 89.02          |        | 89.02                  |
| 215099                          | PO-210061                    | 10/20/2020  | 104290731-001 | 1                                   | 01-0000-0-4300-0000-8210-084-0000-00-000      | NN P                                 |               | 72.38          |        | 72.38                  |
| 215099                          | PO-210061                    | 10/20/2020  | 104290455-001 | 1                                   | 01-0000-0-4300-0000-8210-084-0000-00-000      | NN P                                 |               | 303.87         |        | 303.87                 |
| TOTAL PAYMENT AMOUNT            |                              |             |               |                                     |   |                                      |               | 465.27 *       |        | 465.27                 |
| 105011/00                       | TEACHER SYNERGY LLC          |             |               |                                     |   |                                      |               |                |        |                        |
| 215407                          | PO-210387                    | 11/04/2020  | INC PER COCO  | 1                                   | 01-9421-0-4300-1110-1000-021-9000-91-000      | NY O                                 |               | -200.00        |        | 0.00                   |
| 215407                          | PO-210387                    | 11/04/2020  | INC PER COCO  | 1                                   | 01-9421-0-4300-1110-1000-021-9000-91-000      | NY C                                 |               | 0.00           |        | 0.00                   |
| TOTAL PAYMENT AMOUNT            |                              |             |               |                                     |   |                                      |               | 0.00 *         |        | 0.00                   |
| 103586/00                       | TriMark                      |             |               |                                     |   |                                      |               |                |        |                        |
| 215447                          | PO-210427                    | 09/28/2020  | 2247159-00    | 1                                   | 13-5310-0-4400-0000-3700-000-0000-00-000      | NN F                                 |               | 3,921.06       |        | 3,921.06               |
| 215489                          | PO-210468                    | 10/08/2020  | 2250818-00    | 1                                   | 13-5310-0-4400-0000-3700-000-0000-00-000      | NN F                                 |               | 3,812.74       |        | 3,830.52               |
| TOTAL PAYMENT AMOUNT            |                              |             |               |                                     |   |                                      |               | 7,751.58 *     |        | 7,751.58               |
| TOTAL BATCH PAYMENT             |                              |             |               |                                     |   |                                      |               | 66,721.14 ***  | 0.00   | 66,721.14              |
| TOTAL DISTRICT PAYMENT          |                              |             |               |                                     |   |                                      |               | 66,721.14 **** | 0.00   | 66,721.14              |
| TOTAL FOR ALL DISTRICTS:        |                              |             |               |                                     |   |                                      |               | 66,721.14 **** | 0.00   | 66,721.14              |
| Number of checks to be printed: |                              |             |               |                                     | 23, not counting voids due to stub overflows. |                                      |               |                |        | 66,721.14              |
| Number of zero dollar checks:   |                              |             |               |                                     | 6, will be printed.                           |                                      |               |                |        |                        |

Pursuant to Rescue Union School District Policy, the El Dorado County Superintendent of Schools is hereby authorized and directed to issue individual warrants to the payees named hereon

  
 District Designee

11/4/20  
 Date

| Vendor/Addr<br>Req Reference | Remit name<br>Date | Description | Tax ID num | Deposit type<br>FD RESC Y OBJT | ABA num<br>GOAL FUNC LC1 | Account num<br>LOC2 L3 SCH T9MPS | EE ES<br>Liq Amt | E-Term<br>Net | E-ExtRef<br>Amount |
|------------------------------|--------------------|-------------|------------|--------------------------------|--------------------------|----------------------------------|------------------|---------------|--------------------|
|------------------------------|--------------------|-------------|------------|--------------------------------|--------------------------|----------------------------------|------------------|---------------|--------------------|

|           |                      |            |                              |  |    |          |  |  |        |
|-----------|----------------------|------------|------------------------------|--|----|----------|--|--|--------|
| 104242/00 | SPILLERS, CLAUDIA D. |            |                              |  |    |          |  |  |        |
|           | PV-210291            | 11/06/2020 | SAFEWAY DRIVERS APPRECIATION | 01-0842-0-5200-0000-3600-083-0000-00-000 | NN |          |  |  | 166.03 |
|           |                      |            | TOTAL PAYMENT AMOUNT         |  |    | 166.03 * |  |  | 166.03 |

|           |                          |            |                         |  |      |        |  |          |      |
|-----------|--------------------------|------------|-------------------------|--|------|--------|--|----------|------|
| 106205/00 | VELOCITY ORTHOPEDICS INC |            |                         |  |      |        |  |          |      |
|           | 215286 PO-210255         | 11/06/2020 | CLOSE PER KANDACE COVID | 1 01-7388-0-4300-0000-8200-084-8000-00-000 | NN C |        |  | 1,190.26 | 0.00 |
|           |                          |            | TOTAL PAYMENT AMOUNT    |  |      | 0.00 * |  |          | 0.00 |

|           |                  |            |                            |  |      |          |  |        |        |
|-----------|------------------|------------|----------------------------|--|------|----------|--|--------|--------|
| 100001/00 | VERIZON WIRELESS |            |                            |  |      |          |  |        |        |
|           | 215411 PO-210392 | 10/24/2020 | 9865676647 5 HOT SPOTS     | 2 01-3220-0-5901-1110-1000-120-8000-00-000 | NN P |          |  | 393.70 | 393.70 |
|           | 215411 PO-210392 | 10/24/2020 | 9865676647 SEP 25 - OCT 24 | 2 01-3220-0-5901-1110-1000-120-8000-00-000 | NN P |          |  | 576.65 | 576.65 |
|           |                  |            | TOTAL PAYMENT AMOUNT       |  |      | 970.35 * |  |        | 970.35 |

|           |                               |            |                          |  |      |          |  |        |        |
|-----------|-------------------------------|------------|--------------------------|--|------|----------|--|--------|--------|
| 102998/00 | WELLS FARGO FINANCIAL LEASING |            |                          |  |      |          |  |        |        |
|           | 215223 PO-210160              | 10/28/2020 | 5012492290 102420-112320 | 1 01-0000-0-5690-1110-1000-081-0000-00-000 | NN P |          |  | 235.95 | 235.95 |
|           |                               |            | TOTAL PAYMENT AMOUNT     |  |      | 235.95 * |  |        | 235.95 |


|           |                     |            |                       |  |    |          |  |  |        |
|-----------|---------------------|------------|-----------------------|--|----|----------|--|--|--------|
| 022495/00 | WILLIAMSON, MICHELE |            |                       |  |    |          |  |  |        |
|           | PV-210290           | 11/06/2020 | MACYS RAINY DAY GAMES | 01-1100-0-4300-1110-1000-021-0000-91-000 | NN |          |  |  | 205.79 |
|           | PV-210290           | 11/06/2020 | MACYS RAINY DAY GAMES | 01-1100-0-4300-1110-1000-021-0000-91-000 | NN |          |  |  | 171.49 |
|           | PV-210290           | 11/06/2020 | MACYS RAINY DAY GAMES | 01-1100-0-4300-1110-1000-021-0000-91-000 | NN |          |  |  | 36.44  |
|           |                     |            | TOTAL PAYMENT AMOUNT  |  |    | 413.72 * |  |  | 413.72 |

|                          |                 |      |            |
|--------------------------|-----------------|------|------------|
| TOTAL BATCH PAYMENT      | 316,075.94 ***  | 0.00 | 316,075.94 |
| TOTAL DISTRICT PAYMENT   | 316,075.94 **** | 0.00 | 316,075.94 |
| TOTAL FOR ALL DISTRICTS: | 316,075.94 **** | 0.00 | 316,075.94 |

Number of checks to be printed: 11, not counting voids due to stub overflows.  
 Number of zero dollar checks: 2, will be printed.

316,075.94 ✓

Pursuant to Rescue Union School District Policy, the El Dorado County Superintendent of Schools is hereby authorized and directed to issue individual warrants to the payees named herein

  
 District Designee  
 11/6/20  
 Date

| Vendor/Addr   | Remit name | Tax ID num  | Deposit type                                   | ABA num | Account num | EE      | ES | E-Term     | E-ExtRef |
|---------------|------------|-------------|--|---------|-------------|---------|----|------------|----------|
| Req Reference | Date       | Description | FD RESC Y OBJT GOAL FUNC LC1 LOC2 L3 SCH T9MPS |         |             | Liq Amt |    | Net Amount |          |

|                      |                     |         |   |  |  |         |  |       |  |
|----------------------|---------------------|---------|---|--|--|---------|--|-------|--|
| 100780/00            | TRUE VALUE HARDWARE |         |   |  |  |         |  |       |  |
| 215041 PO-210010     | 10/08/2020          | 1128935 | 1 01-0842-0-4360-0000-3600-083-0000-00-000 NN P |  |  | 43.18   |  | 43.18 |  |
| TOTAL PAYMENT AMOUNT |                     |         |   |  |  | 43.18 * |  | 43.18 |  |

102582/00 US BANK EQUIPMENT FINANCE

|                      |            |           |                  |   |  |            |  |          |  |
|----------------------|------------|-----------|------------------|---|--|------------|--|----------|--|
| 215205 PO-210143     | 10/26/2020 | 427261540 | 102020-112020    | 1 01-0000-0-5633-0000-7200-080-0000-00-000 NN P |  | 50.60      |  | 50.60    |  |
| 215205 PO-210143     | 10/26/2020 | 427261540 | 102020-112020    | 3 01-1100-0-5633-1110-1000-020-0000-90-000 NN P |  | 262.23     |  | 262.23   |  |
| 215205 PO-210143     | 10/26/2020 | 427261540 | 102020-112020    | 4 01-1100-0-5633-1110-1000-021-0000-91-000 NN P |  | 428.98     |  | 428.98   |  |
| 215205 PO-210143     | 10/26/2020 | 427261540 | 102020-112020    | 4 01-1100-0-5633-1110-1000-021-0000-91-000 NN P |  | 47.83      |  | 47.83    |  |
| 215205 PO-210143     | 10/26/2020 | 427261540 | 102020-112020    | 5 01-1100-0-5633-1110-1000-022-0000-92-000 NN P |  | 419.43     |  | 419.43   |  |
| 215205 PO-210143     | 10/26/2020 | 427261540 | 102020-112020 FR | 5 01-1100-0-5633-1110-1000-022-0000-92-000 NN P |  | 16.05      |  | 16.05    |  |
| 215205 PO-210143     | 10/26/2020 | 427261540 | 102020-112020    | 6 01-1100-0-5633-1110-1000-027-0000-97-000 NN P |  | 408.72     |  | 408.72   |  |
| 215205 PO-210143     | 10/26/2020 | 427261540 | 102020-112020    | 7 01-1100-0-5633-1110-1000-028-0000-98-000 NN P |  | 172.36     |  | 172.36   |  |
| 215205 PO-210143     | 10/26/2020 | 427261540 | 102020-112020    | 8 01-8150-0-5633-0000-8110-085-0000-00-000 NN P |  | 9.16       |  | 9.16     |  |
| 215205 PO-210143     | 10/26/2020 | 427261540 | 102020-112020    | 2 01-0842-0-5633-0000-3600-083-0000-00-000 NN P |  | 9.17       |  | 9.17     |  |
| 215208 PO-210146     | 10/26/2020 | 427261540 | 102020-112020 PD | 1 01-0000-0-5690-0000-7200-081-0000-00-000 NN P |  | 44.79      |  | 44.79    |  |
| 215208 PO-210146     | 10/26/2020 | 427261540 | 102020-112020 L  | 1 01-0000-0-5690-0000-7200-081-0000-00-000 NN P |  | 332.78     |  | 332.78   |  |
| 215208 PO-210146     | 10/26/2020 | 427261540 | 102020-112020 PD | 1 01-0000-0-5690-0000-7200-081-0000-00-000 NN P |  | 12.74      |  | 12.74    |  |
| 215208 PO-210146     | 10/26/2020 | 427261540 | 102020-112020 L  | 1 01-0000-0-5690-0000-7200-081-0000-00-000 NN P |  | 79.70      |  | 79.70    |  |
| 215208 PO-210146     | 10/26/2020 | 427261540 | 102020-112020 PD | 2 01-0000-0-5690-1110-1000-081-0000-00-000 NN P |  | 223.95     |  | 223.95   |  |
| 215208 PO-210146     | 10/26/2020 | 427261540 | 102020-112020 L  | 2 01-0000-0-5690-1110-1000-081-0000-00-000 NN P |  | 1,663.91   |  | 1,663.91 |  |
| 215208 PO-210146     | 10/26/2020 | 427261540 | 102020-112020 PD | 3 01-1100-0-5690-1110-1000-021-0000-91-000 NN P |  | 12.86      |  | 12.86    |  |
| 215208 PO-210146     | 10/26/2020 | 427261540 | 102020-112020 L  | 3 01-1100-0-5690-1110-1000-021-0000-91-000 NN P |  | 80.49      |  | 80.49    |  |
| TOTAL PAYMENT AMOUNT |            |           |                  |   |  | 4,275.75 * |  | 4,275.75 |  |


100054/00 VINTAGE TRANSPORT INC

|                      |            |        |                       |   |  |         |  |       |  |
|----------------------|------------|--------|-----------------------|---|--|---------|--|-------|--|
| PV-210298            | 10/29/2020 | 251268 | SHELL, GAS PROP STRUT | 01-8150-0-4300-0000-8110-085-0000-00-000 NN |  | 64.93   |  | 64.93 |  |
| TOTAL PAYMENT AMOUNT |            |        |                       |   |  | 64.93 * |  | 64.93 |  |

001293/00 ZEP SALES & SERVICE

|                      |            |            |   |  |  |          |  |        |  |
|----------------------|------------|------------|---|--|--|----------|--|--------|--|
| 215045 PO-210006     | 10/02/2020 | 9005591025 | 1 01-0842-0-4360-0000-3600-083-0000-00-000 NN P |  |  | 218.82   |  | 218.82 |  |
| TOTAL PAYMENT AMOUNT |            |            |   |  |  | 218.82 * |  | 218.82 |  |

Pursuant to Rescue Union School District Policy, the El Dorado County Superintendent of Schools is hereby authorized and directed to issue individual warrants to the payees named herein

  
District Designee 11/10/20  
Date

|                          |                |      |           |
|--------------------------|----------------|------|-----------|
| TOTAL BATCH PAYMENT      | 27,936.21 ***  | 0.00 | 27,936.21 |
| TOTAL DISTRICT PAYMENT   | 27,936.21 **** | 0.00 | 27,936.21 |
| TOTAL FOR ALL DISTRICTS: | 27,936.21 **** | 0.00 | 27,936.21 |

Number of checks to be printed: 23, not counting voids due to stub overflows.

27,936.21

| Vendor/Addr   | Remit name | Tax ID num  | Deposit type                                   | ABA num | Account num | EE      | ES | E-Term | E-ExtRef   |
|---------------|------------|-------------|--|---------|-------------|---------|----|--------|------------|
| Req Reference | Date       | Description | FD RESC Y OBJT GOAL FUNC LC1 LOC2 L3 SCH T9MPS |         |             | Liq Amt |    |        | Net Amount |

|                      |                   |            |                           |   |  |    |   |  |         |          |
|----------------------|-------------------|------------|---------------------------|---|--|----|---|--|---------|----------|
| 101193/00            | STAPLES ADVANTAGE |            |                           |   |  |    |   |  |         |          |
| 215114               | PO-210048         | 11/04/2020 | 3461252653 FOR 3454775559 | 1 | 01-1100-0-4300-1110-1000-027-0000-97-000 | NN | M |  | -53.40  | -53.40   |
| 215114               | PO-210048         | 11/04/2020 | 3461252652 FOR 3454643394 | 1 | 01-1100-0-4300-1110-1000-027-0000-97-000 | NN | M |  | -106.80 | -106.80  |
| 215238               | PO-210176         | 11/06/2020 | 3461384581                | 1 | 01-1100-0-4300-1110-1000-022-0000-92-000 | NN | P |  | 985.55  | 985.55   |
| 215258               | PO-210195         | 11/05/2020 | 3461314686                | 1 | 01-1100-0-4300-1110-1000-026-0000-96-000 | NN | P |  | 157.64  | 157.64   |
| 215258               | PO-210195         | 11/04/2020 | 3461252655                | 1 | 01-1100-0-4300-1110-1000-026-0000-96-000 | NN | P |  | 256.05  | 256.05   |
| 215151               | PO-210202         | 11/04/2020 | 3461252654                | 1 | 13-5310-0-4300-0000-3700-000-0000-00-000 | NN | P |  | 695.13  | 695.13   |
| 215275               | PO-210253         | 10/28/2020 | 3460251620                | 1 | 01-1100-0-4300-1110-1000-028-0000-98-000 | NN | P |  | 40.54   | 40.54    |
| 215275               | PO-210253         | 10/28/2020 | 3460251621                | 1 | 01-1100-0-4300-1110-1000-028-0000-98-000 | NN | P |  | 13.33   | 13.33    |
| TOTAL PAYMENT AMOUNT |                   |            |                           |   | 1,988.04 *                               |    |   |  |         | 1,988.04 |

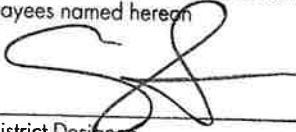
|                      |                    |            |                     |   |  |    |   |  |        |        |
|----------------------|--------------------|------------|---------------------|---|--|----|---|--|--------|--------|
| 105310/00            | TCG ADMINISTRATORS |            |                     |   |  |    |   |  |        |        |
| 215219               | PO-210156          | 11/06/2020 | 165917 SEPT AND OCT | 1 | 01-0000-0-5806-0000-7400-504-0000-00-000 | NN | P |  | 166.00 | 166.00 |
| TOTAL PAYMENT AMOUNT |                    |            |                     |   | 166.00 *                                 |    |   |  |        | 166.00 |

|                      |                     |            |           |   |  |    |   |  |       |       |
|----------------------|---------------------|------------|-----------|---|--|----|---|--|-------|-------|
| 105011/00            | TEACHER SYNERGY LLC |            |           |   |  |    |   |  |       |       |
| 215113               | PO-210049           | 11/05/2020 | 133368176 | 1 | 01-1100-0-4300-1110-1000-027-0000-97-000 | NY | P |  | 21.00 | 21.00 |
| 215407               | PO-210387           | 11/04/2020 | 133174192 | 1 | 01-9421-0-4300-1110-1000-021-9000-91-000 | NY | P |  | 11.20 | 11.20 |
| TOTAL PAYMENT AMOUNT |                     |            |           |   | 32.20 *                                  |    |   |  |       | 32.20 |

|                          |  |                 |      |            |
|--------------------------|--|-----------------|------|------------|
| TOTAL BATCH PAYMENT      |  | 128,556.18 ***  | 0.00 | 128,556.18 |
| TOTAL DISTRICT PAYMENT   |  | 128,556.18 **** | 0.00 | 128,556.18 |
| TOTAL FOR ALL DISTRICTS: |  | 128,556.18 **** | 0.00 | 128,556.18 |

Number of checks to be printed: 41, not counting voids due to stub overflows. 128,556.18 ✓

Pursuant to Rescue Union School District Policy, the El Dorado County Superintendent of Schools is hereby authorized and directed to issue individual warrants to the payees named hereon

  
District Designee

11/13/20  
Date

01 GENERAL FUND

| P.O.#  | VENDOR NAME                    | DESCRIPTION                    | AMOUNT    | SITE NAMES                   |
|--------|--------------------------------|--------------------------------|-----------|------------------------------|
| 210555 | ACCELERATE LEARNING INC        | StemScopes-6 month elem bridge | 6,777.60  | DISTRICTWIDE SERVICES        |
| 210581 | ACTION SUPPORTIVE CARE SERVICE | Contracting Nursing Services   | 40,999.00 | DISTRICTWIDE SERVICES        |
| 210528 | ALL SAFETY PRODUCTS INC        | ALL SAFETY SINK ORDER          | 7,584.90  | Maintenance                  |
| 210548 | ALL SAFETY PRODUCTS INC        | HAND SINKS                     | 14,727.79 | DISTRICTWIDE SERVICES        |
| 210534 | AMAZON CAPITAL SERVICES INC    | tech supplies                  | 823.81    | DISTRICTWIDE SERVICES        |
| 210547 | AMAZON CAPITAL SERVICES INC    | LF -Rubbermaid-library bks dry | 308.49    | DISTRICTWIDE SERVICES        |
| 210549 | AMAZON CAPITAL SERVICES INC    | Amazon- Art Elective           | 22.37     | Pleasant Grove Middle School |
| 210550 | AMAZON CAPITAL SERVICES INC    | Misc tech supplies 1110-1000   | 705.43    | DISTRICTWIDE SERVICES        |
| 210542 | AMERICAN RED CROSS             | CPR Training                   | 420.00    | DISTRICTWIDE SERVICES        |
| 210562 | APPLE COMPUTER INC             | Ipads for students             | 1,293.44  | DISTRICTWIDE SERVICES        |
| 210566 | APPLE COMPUTER INC             | iMac for Band- Gen. Music      | 3,414.84  | Pleasant Grove Middle School |
| 210541 | ARROW FENCE CO                 |                                | 17,548.00 | Transportation               |
| 210564 | ASCD                           | ASCD                           | 59.00     | Rescue School                |
| 210527 | CARTER KELLY INC               | CARTER KELLY GYM               | 37,289.00 | Lake Forest School           |
| 210565 | CARTER KELLY INC               |                                | 3,772.00  | Maintenance                  |
| 210580 | CARTER KELLY INC               |                                | 9,600.00  | Maintenance                  |
| 210556 | CDW-G                          | 2 LCD Projectors               | 1,048.91  | DISTRICTWIDE SERVICES        |
| 210545 | COMPUGROUP MEDICAL INC         | Medi-Cal Billing Contract      | 5,500.00  | DISTRICTWIDE SERVICES        |
| 210536 | CORWIN PRESS INC               | On-Line Conference (Best)      | 99.00     | DISTRICTWIDE SERVICES        |
| 210532 | DEMCO INC                      | Library Supplies for LF        | 146.15    | DISTRICTWIDE SERVICES        |
| 210570 | DEMCO INC                      | Library Supplies: J, R, GV, PG | 383.50    | DISTRICTWIDE SERVICES        |
| 210578 | DOMCO PLUMBING INC             |                                | 3,480.00  | Maintenance                  |
| 210544 | DUERR EVAL RESOURCES/CHKS      | CHKS                           | 959.60    | DISTRICTWIDE SERVICES        |
| 210554 | FERRELLGAS                     | OPEN PO PROPANE 20/21          | 52,000.00 | DISTRICTWIDE SERVICES        |
| 210531 | FOLLETT SCHOOLS SOLUTIONS INC  | LF - Missing Book Replacements | 97.14     | DISTRICTWIDE SERVICES        |
| 210568 | FOLLETT SCHOOLS SOLUTIONS INC  | R - Missing Book Replacements  | 201.29    | DISTRICTWIDE SERVICES        |
| 210569 | FOLLETT SCHOOLS SOLUTIONS INC  | J - Missing Book Replacements  | 189.42    | DISTRICTWIDE SERVICES        |
| 210572 | FOLLETT SCHOOLS SOLUTIONS INC  | Library books                  | 698.84    | Marina Village School        |
| 210574 | FOLLETT SCHOOLS SOLUTIONS INC  | Birthday Books                 | 156.86    | Lakeview                     |
| 210552 | FOUNDATION FOR EDUCATIONAL ADM | On-Line Conference             | 149.00    | DISTRICTWIDE SERVICES        |
| 210535 | GENERATION GENIUS INC          | S.Williams annual subscription | 125.00    | Marina Village School        |
| 210560 | GOPHER SPORT                   | Recess Equipment               | 684.49    | Lakeview                     |
| 210539 | H & E EQUIPMENT SERVICES INC   |                                | 1,230.18  | Maintenance                  |
| 210557 | IXL.COM                        | 25 more licenses needed PG/MV  | 250.00    | DISTRICTWIDE SERVICES        |
| 210575 | JUNIOR LIBRARY GUILD           | Birthday Books                 | 125.48    | Lakeview                     |
| 210551 | MAVERICK NETWORKS INC          | Mitel Renewal - 3rd year       | 11,857.00 | DISTRICTWIDE SERVICES        |
| 210576 | MAXIM HEALTHCARE SERVICES INC  | Settlement Services-behavioral | 25,200.00 | DISTRICTWIDE SERVICES        |
| 210582 | MAXIM HEALTHCARE SERVICES INC  | RBT Services for G.H.          | 24,200.00 | DISTRICTWIDE SERVICES        |
| 210577 | OTICON INC                     | Low Incentive order            | 575.70    | DISTRICTWIDE SERVICES        |
| 210540 | PACIFIC LIFT AND EQUIPMENT CO  |                                | 17,032.51 | Transportation               |
| 210558 | PAR                            | Psych Testing Supplies         | 154.44    | DISTRICTWIDE SERVICES        |
| 210533 | PERMA BOUND                    | LF -missing books due to covid | 104.77    | DISTRICTWIDE SERVICES        |
| 210530 | RISO PRODUCTS OF SACRAMENTO    | RISO SUPPLIES                  | 263.18    | Lake Forest School           |
| 210537 | SAVVAS LEARNING COMPANY LLC    | Intervention Materials         | 214.50    | Green Valley School          |
| 210573 | SCHOLASTIC TEACHER STORE       | 4th Grade Books                | 183.77    | Lakeview                     |
| 210567 | SCHOOL SPECIALTY INC           | Special Paper for 2nd Grade    | 57.30     | Green Valley School          |
| 210563 | T&M ELECTRIC                   |                                | 1,000.00  | Maintenance                  |
| 210543 | TAILORED TREE                  |                                | 19,500.00 | Maintenance                  |
| 210529 | TEACHER SYNERGY LLC            | OPEN PO                        | 300.00    | Lake Forest School           |
| 210538 | TEACHER SYNERGY LLC            | Frontier: Melissa Heninger     | 54.17     | DISTRICTWIDE SERVICES        |
| 210546 | TEACHER SYNERGY LLC            | Frontier: Julie Burkhart       | 31.50     | DISTRICTWIDE SERVICES        |

01 GENERAL FUND

| P.O.#      | VENDOR NAME                  | DESCRIPTION                    | AMOUNT     | SITE NAMES                   |
|------------|------------------------------|--------------------------------|------------|------------------------------|
| 210553     | TEACHER SYNERGY LLC          | TPT- Teacher Synergy-Gen. Don. | 140.00     | Pleasant Grove Middle School |
| 210559     | TEACHER SYNERGY LLC          | Frontier: Julie Burkhart       | 39.89      | DISTRICTWIDE SERVICES        |
| 210571     | TEACHERS CURRICULUM INST TCI | LF - 3rd grade history wkbks   | 457.21     | DISTRICTWIDE SERVICES        |
| 210561     | TYPING AGENT LLC             | Renewal thru 1/31/2022         | 2,530.00   | DISTRICTWIDE SERVICES        |
| TOTAL FUND |                              |                                | 316,766.47 |                              |



13 CAFETERIA FUND

| P.O.#  | VENDOR NAME      | DESCRIPTION    | AMOUNT     | SITE NAMES  |
|--------|------------------|----------------|------------|-------------|
| 210579 | CARTER KELLY INC |                | 7,000.00   | Maintenance |
|        |                  | TOTAL FUND     | 7,000.00   |             |
|        |                  | TOTAL DISTRICT | 323,766.47 |             |

| FUND |                | AMOUNT     |
|------|----------------|------------|
| 01   | GENERAL FUND   | 316,766.47 |
| 13   | CAFETERIA FUND | 7,000.00   |
|      | TOTAL DISTRICT | 323,766.47 |

**RESCUE UNION SCHOOL DISTRICT**

**AGENDA ITEM:   Certificated Personnel**

**BACKGROUND:**

Periodically changes in certificated staffing occur due to hiring, resignations or request for leaves of absence. The Board must formally approve these requests.

**STATUS:**

The following certificated personnel changes are listed on the agenda.

| <b>Name</b>      | <b>Personnel Action</b> | <b>Position<br/>FTE</b> | <b>Position</b> | <b>School or Dept.</b> | <b>Effective<br/>Date</b> |
|------------------|-------------------------|-------------------------|-----------------|------------------------|---------------------------|
| Gretchen Belleci | 100% LOA                | 1.0                     | Teacher         | Marina Village         | 2/4/2021                  |
|                  |                         |                         |                 |                        |                           |

**FISCAL IMPACT:**

Fiscal impact will be reflected in the 2020-21 budget.

**BOARD GOAL:**

Board Focus Goal IV – STAFF NEEDS:

Attract and retain diverse, knowledgeable, dedicated employees who are skilled and supported in their commitment to providing quality education for our students.

**RECOMMENDATION:**

The Superintendent recommends the Board approve the above personnel actions.

**RESCUE UNION SCHOOL DISTRICT**

**AGENDA ITEM:      Classified Personnel**

**BACKGROUND:**

Periodically changes in classified staffing occur due to hiring, resignations or requests for leaves of absence. The Board must formally approve these requests.

**STATUS:**

The following classified personnel changes are listed on the agenda:

| <b>Name</b>     | <b>Personnel Action</b> | <b>Position FTE</b> | <b>Position</b> | <b>School/Dept.</b>      | <b>Effective Date</b> |
|-----------------|-------------------------|---------------------|-----------------|--------------------------|-----------------------|
| Hillel, Maureen | Resignation             | 1.0                 | Behaviorist     | Student Support Services | 11/13/20              |

**FISCAL IMPACT:**

Fiscal impact will be reflected in the 2020-2021 budget years.

**BOARD GOAL:**

Board Focus Goal IV – STAFF NEEDS:  
Attract and retain diverse, knowledgeable, dedicated employees who are skilled and supported in their commitment to providing quality education for our students.

**RECOMMEDATION:**

The Superintendent recommends the Board approve the above personnel actions.

**RESCUE UNION SCHOOL DISTRICT**

**AGENDA ITEM:      Classified Personnel**

**BACKGROUND:**

Periodically changes in classified staffing occur due to hiring, resignations or requests for leaves of absence. The Board must formally approve these requests.

**STATUS:**

The following classified personnel changes are listed on the agenda:

| <b>Name</b>               | <b>Personnel Action</b> | <b>Position FTE</b> | <b>Position</b>                    | <b>School/Dept.</b> | <b>Effective Date</b> |
|---------------------------|-------------------------|---------------------|------------------------------------|---------------------|-----------------------|
| Calhoun, Sean             | Employment              | .75                 | Bus Driver                         | Transportation      | 12/01/20              |
| Hall, Jamie               | Employment              | .17                 | Instructional Assistant            | Green Valley        | 12/01/20              |
| Heppler, Aimee            | Employment              | .75                 | Itinerant Independence Facilitator | Jackson             | 01/04/21              |
| Overton, Brian            | Employment              | .63                 | Bus Driver                         | Transportation      | 11/16/20              |
| Castillo, Lissette        | LOA – 100%              |                     | Food Service Worker                | Food Service        | 01/04/21              |
| Aasen, Morgan             | Resignation             | .13                 | Instructional Assistant – TK       | Lakeview            | 01/03/21              |
| Hutchins, Robin           | Resignation             | .08                 | Yard Supervisor                    | Green Valley        | 12/18/20              |
| Langton, Deborah          | Resignation             | .88                 | Support Services Secretary         | Food Service        | 12/25/20              |
| Lovejoy, Nancy            | Resignation             | .44                 | Yard Supervisor                    | Green Valley        | 11/12/20              |
| Rodriguez, Heather        | Resignation             | .17                 | Instructional Assistant            | Green Valley        | 12/11/20              |
| Ruffini de Anquin, Sandra | Resignation             | 1.0                 | Student Service Secretary          | Lake Forest         | 01/01/21              |
| Williams, Janette         | Resignation             | .49                 | Yard Supervisor                    | Jackson             | 12/18/20              |

**FISCAL IMPACT:**

Fiscal impact will be reflected in the 2020-2021 budget years.

**BOARD GOAL:**

Board Focus Goal IV – STAFF NEEDS:

Attract and retain diverse, knowledgeable, dedicated employees who are skilled and supported in their commitment to providing quality education for our students.

**RECOMMEDATION:**

The Superintendent recommends the Board approve the above personnel actions.

RESCUE UNION SCHOOL DISTRICT

**AGENDA ITEM:** AB-181 DEPARTMENT OF REAL ESTATE SUBDIVISION  
"WHITE PAPER" RESPONSE AND  
STUDENT YIELD IMPACT ANALYSIS  
Serrano Village M2-Unit 1  
Advertising Name: Serrano Village M2-Unit 1

**BACKGROUND:**

Changes in the law promulgated by AB 181, as of October 1, 1989, all subdivisions in the State of California must include a statement regarding the availability of schools in their Department of Real Estate (DRE) "White Report". We have received a request for such a statement (see attached letter from consulting company). At their request, we have prepared a response.

It is required by law that the response provided must be approved by the Board of Education during a public meeting (consent item is appropriate). Because this approval is required by law, the DRE will require that a copy of the Board's approval action be submitted along with the response to each individual project.

**STATUS:**

The DRE "White Report" for the following development has been submitted to the district for review and action by the Board of Trustees (copy enclosed):

**Serrano Village M2 – Unit 1**  
**Location: El Dorado County, California**

The Rescue Union School District has established a .357 student yield factor per single-family unit. Accordingly, staff estimates the District can expect there will be 3.93 students generated from this subdivision.

The Rescue Union School District has the capacity to house students at both the elementary and middle school levels. This capacity may not be within the students' current school attendance boundaries.

**FISCAL IMPACT:**

None at this time.

**BOARD GOAL:**

Board Focus Goal V - FACILITY/HOUSING:

Build, improve and maintain school facilities to meet current and future educational needs while integrating the most effective and efficient use of resources.

**RECOMMENDATION:**

The Board of Trustees approve the response statement for the proposed development as outlined in this report.

J-138 A

J-138 A

**BASIS OF BEARINGS:**

THE BASIS OF BEARINGS FOR THIS SURVEY IS IDENTICAL TO THAT SHOWN ON SUB. J-36 AND IS GRID NORTH. ROTATE BEARINGS CLOCKWISE 00°35'17" TO OBTAIN TRUE NORTH BEARINGS. ALL DISTANCES ARE GROUND DISTANCES.



| CURVE TABLE |                |         |           |         |
|-------------|----------------|---------|-----------|---------|
| Curve       | Chord Bearing  | Chord   | Delta     | Radius  |
| C1          | Ch=N61°00'50"E | 104.35' | 24°05'37" | 250.00' |

**REFERENCES:**

- (1) SUB: I-14
- (2) SUB: J-36
- (3) SUB: J-129
- (4) RS 24-143

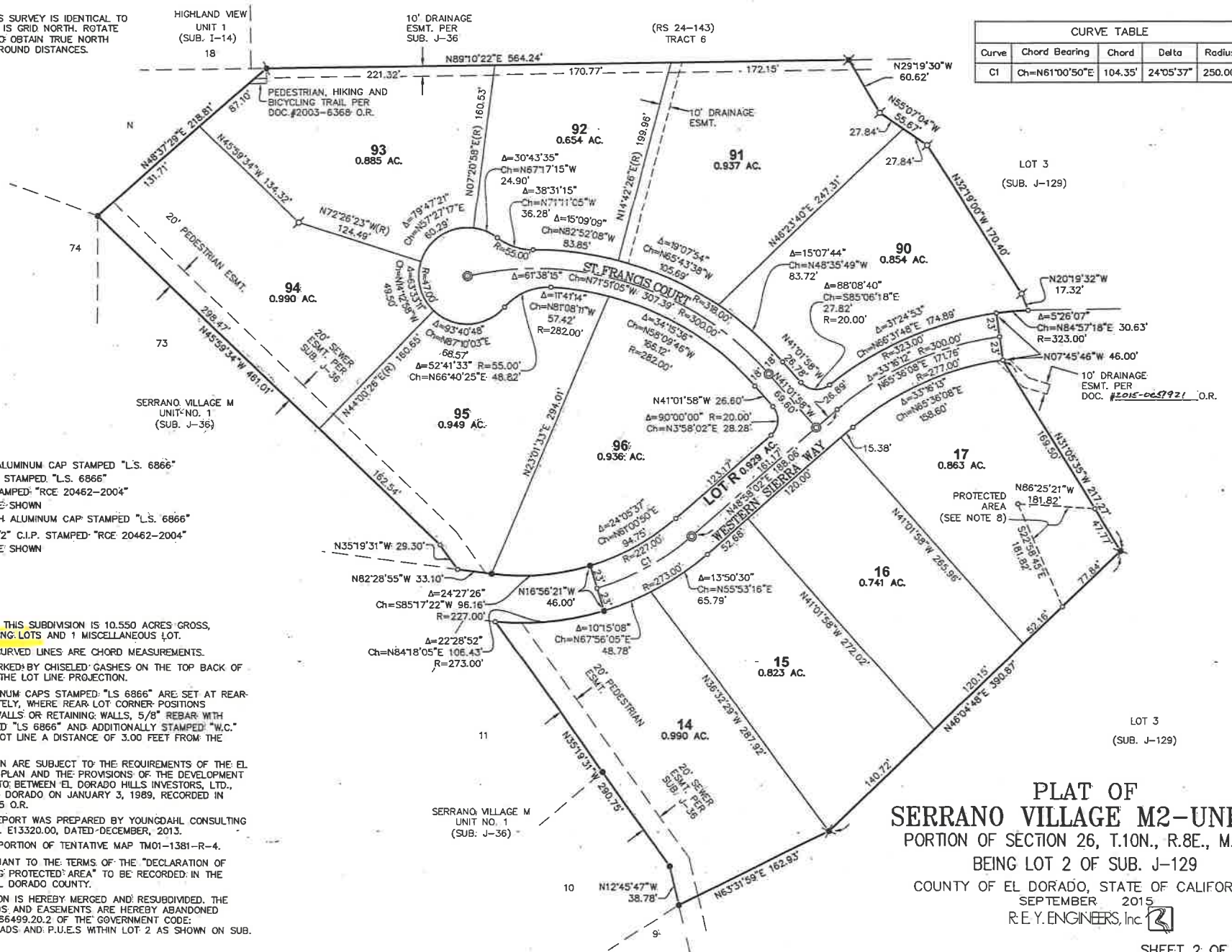
**LEGEND:**

- o DIMENSION POINT
- ⊕ SET 5/8" REBAR WITH ALUMINUM CAP STAMPED "L.S. 6866"
- ⊙ SET SPIKE AND WASHER STAMPED "L.S. 6866"
- ⊕ FOUND 1-1/2" C.I.P. STAMPED: "RCE 20462-2004" UNLESS YEAR OTHERWISE SHOWN
- ⊕ FOUND 5/8" REBAR WITH ALUMINUM CAP STAMPED "L.S. 6866"
- RECORD INDICATES 1-1/2" C.I.P. STAMPED: "RCE 20462-2004" UNLESS YEAR OTHERWISE SHOWN
- (R) RADIAL

**NOTES:**

1. THE TOTAL AREA WITHIN THIS SUBDIVISION IS 10.550 ACRES GROSS, CONSISTING OF 11 BUILDING LOTS AND 1 MISCELLANEOUS LOT.
2. ALL DISTANCES ALONG CURVED LINES ARE CHORD MEASUREMENTS.
3. SIDE LOT LINES ARE MARKED BY CHISELED GASHES ON THE TOP BACK OF CURB OR SIDEWALK ON THE LOT LINE PROJECTION.
4. 5/8" REBAR WITH ALUMINUM CAPS STAMPED "L.S. 6866" ARE SET AT REAR LOT CORNERS. ALTERNATELY, WHERE REAR LOT CORNER POSITIONS CONFLICT WITH SOUND WALLS OR RETAINING WALLS, 5/8" REBAR WITH ALUMINUM CAPS STAMPED "L.S. 6866" AND ADDITIONALLY STAMPED "W.C." ARE SET ON THE SIDE LOT LINE A DISTANCE OF 3.00 FEET FROM THE ACTUAL CORNER.
5. ALL LOTS SHOWN HEREON ARE SUBJECT TO THE REQUIREMENTS OF THE EL DORADO HILLS SPECIFIC PLAN AND THE PROVISIONS OF THE DEVELOPMENT AGREEMENT ENTERED INTO BETWEEN EL DORADO HILLS INVESTORS, LTD., AND THE COUNTY OF EL DORADO ON JANUARY 3, 1989, RECORDED IN BOOK 3108 AT PAGE 105 O.R.
6. A PRELIMINARY SOILS REPORT WAS PREPARED BY YOUNGDAHL CONSULTING GROUP INC., REPORT No. E13320.00, DATED DECEMBER, 2013.
7. UNIT 1 CONSISTS OF A PORTION OF TENTATIVE MAP TM01-1381-R-4.
8. PROTECTED AREA PURSUANT TO THE TERMS OF THE "DECLARATION OF RESTRICTIONS REGARDING PROTECTED AREA" TO BE RECORDED IN THE OFFICIAL RECORDS OF EL DORADO COUNTY.
9. THE LAND SHOWN HEREON IS HEREBY MERGED AND RESUBDIVIDED. THE FOLLOWING PUBLIC ROADS AND EASEMENTS ARE HEREBY ABANDONED PURSUANT TO SECTION 64499.20.2 OF THE GOVERNMENT CODE: THE NON-EXCLUSIVE ROADS AND P.U.E.S WITHIN LOT 2 AS SHOWN ON SUB. J-129.

J-138 A



**PLAT OF**  
**SERRANO VILLAGE M2-UNIT 1**  
 PORTION OF SECTION 26, T.10N., R.8E., M.D.M.  
 BEING LOT 2 OF SUB. J-129  
 COUNTY OF EL DORADO, STATE OF CALIFORNIA  
 SEPTEMBER 2015  
 R.E.Y. ENGINEERS, Inc.

OWNER'S STATEMENT:

IE UNDERSIGNED, OWNER OF RECORD TITLE INTEREST, HEREBY CONSENTS TO THE REPARATION AND FILING OF THIS FINAL MAP, AND HEREBY MAKES AN IRREVOCABLE OFFER OF DEDICATION IN FEE, FOR ROAD AND PUBLIC UTILITIES PURPOSES OF THAT PROPERTY SHOWN HEREON AS LOT R. SAID OFFER IS SUBJECT TO THAT CERTAIN AGREEMENT BETWEEN THE UNDERSIGNED OWNER AND THE COUNTY OF EL DORADO DATED OCTOBER 27, 2015, RECORDED AT DOCUMENT NO. 2015-0057920, O.R. AND INCORPORATED BY REFERENCE IN THIS OWNER'S STATEMENT AS IF SET FORTH IN FULL.

IE UNDERSIGNED OWNER HEREBY RESERVES, AND SHALL FURTHER RESERVE THROUGH MY CONVEYANCE OF TITLE HEREAFTER GRANTED, THE RIGHT TO CONVEY EASEMENTS FOR ROAD AND UTILITIES PURPOSES OVER AND ACROSS LOT R AND EASEMENTS SHOWN HEREON, SUBJECT TO ANY RIGHTS OF THE COUNTY OF EL DORADO IN THE EVENT THE COUNTY SHOULD ACCEPT THE OFFER REFERRED TO HEREIN.

- A. PUBLIC UTILITIES EASEMENTS FOR UNDERGROUND WRES, CONDUITS AND PIPELINES; AND APPURTENANT FIXTURES, WITH THE RIGHT TO TRIM AND REMOVE LIMBS, TREES AND BRUSH THEREFROM, OVER, UNDER AND ACROSS THE COMMON AREAS, LOT R, THE FRONT FIFTEEN (15.00) FEET OF EACH LOT SHOWN HEREON AND THE FIVE (5.00) FEET ON BOTH SIDES OF ALL SIDE LOT LINES EXTENDING FROM THE STREET RIGHT-OF-WAYS SHOWN HEREON ALONG SAID SIDE LOT LINES A DISTANCE OF FIFTY (50.00) FEET.
B. RIGHTS OF ACCESS OVER AND ACROSS ANY PORTION OF THE LOTS, COMMON AREAS, AND LOT R FOR THE PURPOSE OF INSPECTING, MAINTAINING OR REPLACING ON SITE FACILITIES.
C. SLOPE EASEMENTS, TWENTY (20.00) FEET IN WIDTH CONTIGUOUS TO ALL STREETS OR FIVE (5.00) FEET BEYOND THE TOP OF CUT-OR-TOE OF FILL, WHICHEVER IS LARGER, FOR ROAD AND SLOPE MAINTENANCE PURPOSES.
D. EASEMENTS FOR DRAINAGE AND APPURTENANT DRAINAGE STRUCTURES AND PIPES WITHIN THE DRAINAGE EASEMENTS SHOWN HEREON AND SEVEN AND ONE HALF (7-1/2) FEET ON EACH SIDE OF ALL NATURAL OR CONSTRUCTED DRAINAGE WAYS WHICH EXIST WITHIN THE SUBDIVISION, SUBJECT TO THAT CERTAIN AGREEMENT BETWEEN THE UNDERSIGNED OWNER AND EL DORADO COUNTY DATED OCTOBER 27, 2015, RECORDED AT DOCUMENT NO. 2015-0057919, O.R. AND INCORPORATED BY REFERENCE IN THIS OWNER'S STATEMENT AS IF SET FORTH IN FULL.
E. PEDESTRIAN EASEMENTS, TWENTY (20.00) FEET IN WIDTH ON, OVER AND ACROSS THE LOTS SHOWN HEREON AND DESIGNATED "PEDESTRIAN EASEMENT".
F. POSTAL EASEMENTS FIVE (5) FEET ADJACENT TO ALL STREET RIGHT-OF-WAYS.

SERRANO ASSOCIATES, LLC DELAWARE LIMITED LIABILITY COMPANY

PARKER DEVELOPMENT COMPANY A CALIFORNIA CORPORATION MANAGING MEMBER BY: [Signature] TITLE: President

NOTARY PUBLIC OR OTHER OFFICER COMPLETING THIS CERTIFICATE VERIFIES ONLY THE IDENTITY OF THE INDIVIDUAL WHO SIGNED THE DOCUMENT TO WHICH THIS CERTIFICATE IS ATTACHED; AND NOT THE TRUTHFULNESS, ACCURACY, OR VALIDITY OF THAT DOCUMENT.

NOTARY ACKNOWLEDGMENT:

STATE OF California } :SS COUNTY OF El Dorado } I, 9-23-15, BEFORE ME, Fiorena Troner, Notary Public, PERSONALLY appeared William R. Parker, WHO PROVED TO ME ON THE BASIS OF SATISFACTORY EVIDENCE TO BE THE PERSON(S) WHOSE NAME(S) I AM SUBSCRIBED TO THE WITHIN INSTRUMENT AND ACKNOWLEDGED TO ME THAT HE/SHE/IT WAS/WERE THE SAME IN HIS/HER/ITS AUTHORIZED CAPACITY(IES) AND THAT BY HIS/HER/ITS SIGNATURE(S) ON THE INSTRUMENT, THE PERSON(S) OR THE ENTITY, UPON BEHALF OF WHICH THE PERSON(S) ACTED, EXECUTED THE INSTRUMENT.

CERTIFY UNDER PENALTY OF PERJURY UNDER THE LAWS OF THE STATE OF CALIFORNIA THE FOREGOING PARAGRAPH IS TRUE AND CORRECT. I SIGN MY HAND AND OFFICIAL SEAL. SIGNATURE: Fiorena Troner PRINCIPAL PLACE OF BUSINESS: COUNTY OF El Dorado COMMISSION EXPIRES: 6-13-18

PLAT OF SERRANO VILLAGE M2-UNIT 1

PORTION OF SECTION 26, T.10N., R.8E., M.D.M. BEING LOT 2 OF SUB. J-129 COUNTY OF EL DORADO, STATE OF CALIFORNIA SEPTEMBER 2015 R.E.Y. ENGINEERS, Inc [Signature]

SURVEYOR'S STATEMENT:

THIS MAP WAS PREPARED BY ME OR UNDER MY DIRECTION AND IS BASED UPON A FIELD SURVEY IN CONFORMANCE WITH THE REQUIREMENTS OF THE SUBDIVISION MAP ACT AND LOCAL ORDINANCE AT THE REQUEST OF SERRANO ASSOCIATES, LLC. IN JULY, 2015. I HEREBY STATE THAT THIS FINAL MAP SUBSTANTIALLY CONFORMS TO THE CONDITIONALLY APPROVED TENTATIVE MAP AND THAT THE MONUMENTS WILL BE OF THE CHARACTER AND WILL OCCUPY THE POSITIONS INDICATED AND WILL BE SET BY DECEMBER, 2016 AND THAT SAID MONUMENTS WILL BE SUFFICIENT TO ENABLE THE SURVEY TO BE RETRACED.

[Signature] BRIAN THIONNET L.S. 6866 DATE: 9-17-15



COMMUNITY DEVELOPMENT AGENCY COUNTY ENGINEER'S STATEMENT:

I, ANDREW S. GABER, HEREBY STATE THAT ALL THE REQUIRED CONSTRUCTION PLANS AND SPECIFICATIONS WERE APPROVED AND THAT THE SUBDIVIDER HAS EXECUTED THE NECESSARY AGREEMENT AND SUBMITTED THE REQUIRED SECURITY TO SECURE COMPLETION OF THE REQUIRED IMPROVEMENTS FOR THE SUBDIVISION.

[Signature] ANDREW S. GABER PCE 45187 COUNTY ENGINEER COMMUNITY DEVELOPMENT AGENCY TRANSPORTATION DIVISION COUNTY OF EL DORADO, CALIFORNIA DATE: 10/14/2015



COMMUNITY DEVELOPMENT AGENCY DEVELOPMENT SERVICES DIRECTOR'S STATEMENT:

I, ROGER TROUT, HEREBY STATE THAT THIS FINAL MAP CONFORMS SUBSTANTIALLY TO THE TENTATIVE MAPS OF THIS SUBDIVISION APPROVED ON JULY 9, 2014, BY THE BOARD OF SUPERVISORS AND ANY APPROVED ALTERATIONS THEREOF AND THAT ALL CONDITIONS IMPOSED UPON SAID APPROVALS HAVE BEEN SATISFIED.

DATE: 10-13-15 [Signature] ROGER TROUT COUNTY OF EL DORADO, CALIFORNIA PRINCIPAL PLANNER COUNTY OF EL DORADO, CALIFORNIA

COUNTY SURVEYOR'S STATEMENT:

I HAVE EXAMINED THE MAP. THE SUBDIVISION AS SHOWN IS SUBSTANTIALLY THE SAME AS IT APPEARED ON THE TENTATIVE MAP, IF REQUIRED, AND ANY APPROVED ALTERATIONS THEREOF. ALL PROVISIONS OF CHAPTER 2 OF THE SUBDIVISION MAP ACT AND OF ANY LOCAL ORDINANCES APPLICABLE AT THE TIME OF APPROVAL OF THE TENTATIVE MAP, IF REQUIRED, HAVE BEEN COMPLIED WITH. I AM SATISFIED THAT THE MAP IS TECHNICALLY CORRECT.

[Signature] RICHARD L. BRINER L.S. 5084 COUNTY SURVEYOR COUNTY OF EL DORADO, CALIFORNIA

DATE: 10/16/15



[Signature] PHILIP R. MOSBACHER L.S. 7189 DEPUTY SURVEYOR COUNTY OF EL DORADO, CALIFORNIA

COUNTY TAX COLLECTOR'S STATEMENT:

I, C.L. RAFFETY, HEREBY STATE THAT, ACCORDING TO THE RECORDS OF THIS OFFICE, THERE ARE NO LIENS AGAINST THIS SUBDIVISION OR ANY PART THEREOF FOR UNPAID STATE, COUNTY, MUNICIPAL, OR LOCAL TAXES OR SPECIAL ASSESSMENTS COLLECTED TAXES, EXCEPT TAXES OR SPECIAL ASSESSMENTS NOT YET PAYABLE, PROVIDED THAT THE FINAL MAP IS ACCEPTED FOR RECORD AND FILED PRIOR TO THE NEXT SUCCEEDING LIEN DATE.

[Signature] C.L. RAFFETY TAX COLLECTOR COUNTY OF EL DORADO, CALIFORNIA

DATE: Sept. 25, 2015

BY: [Signature] Cami Roberts, Deputy DEPUTY

BOARD CLERK'S STATEMENT:

I, JAMES S. MITRISIN, HEREBY STATE THAT THE BOARD OF SUPERVISORS, BY ORDER ON 10/27/15, ADOPTED AND APPROVED THIS FINAL MAP OF THIS SUBDIVISION AND ACCEPT SUBJECT TO IMPROVEMENTS FOR PUBLIC USES, THE READS COURTS AND CIRCLES, AND FURTHER ACCEPTS ON BEHALF OF THOSE PUBLIC ENTITIES THAT WILL PROVIDE SERVICES, SUBJECT TO THE SURVEYOR'S CONSTRUCTION STANDARDS THE EASEMENTS AS SHOWN HEREON AND AS OFFERED FOR DEDICATION, EXCEPT DRAINAGE EASEMENTS AND LOT R WHICH ARE HEREBY REJECTED AND DID ABANDON 1 EASEMENTS REFERENCED IN THE NOTES.

[Signature] JAMES S. MITRISIN CLERK OF THE BOARD OF SUPERVISORS COUNTY OF EL DORADO, CALIFORNIA

DATE: 10/27/15



COUNTY RECORDER'S CERTIFICATE:

FILED THIS 12th DAY OF November, 2015 AT 12:09:49 PM BOOK J OF MAPS, AT PAGE 138 DOCUMENT NO. 2015-0052479 THE REQUEST OF SERRANO ASSOCIATES, LLC, TITLE TO THE LAND INCLUDED IN THIS SUBDIVISION IS GUARANTEED BY TITLE CERTIFICATE NO. 86-2-C11002 PREPARED BY PLACER TITLE COMPANY AND IS ON FILE IN THIS OFFICE. \* 3370637

[Signature] WILLIAM E. SCHULTZ COUNTY RECORDER, CLERK COUNTY OF EL DORADO, CALIFORNIA BY: [Signature] DEPUTY





## RESCUE UNION SCHOOL DISTRICT

*"Educating for the Future Together"*

2390 Bass Lake Road • Rescue, CA 95672

(530) 677-4461 • FAX (530) 677-0719

[www.rescueusd.org](http://www.rescueusd.org)

---

December 15, 2020

Andrea Howard  
Principal Planner  
Parker Development Company  
ahoward@parkerdevco.com

Re: Name: Serrano Village M2-Unit 1  
Advertising Name: Serrano Village M2-Unit 1

Dear Andrea Howard:

The attached Statement of School Availability is being sent in response to your request for information regarding the status of school availability in the Rescue Union School District.

The Rescue Union School District has seven schools. The location, address and phone number for each site is shown on the enclosed map.

School attendance boundaries have been established by the district but are subject to change, and availability of neighborhood schools may be impacted by student enrollment. Potential purchasers should contact the school district directly at (530) 677-4461 for current information regarding the school they will attend at the time of purchase.

Rescue Union School District requests that you furnish the complete Statement of School Availability Report to all prospective purchasers of residences within the above-mentioned development.

Sincerely,

Sean Martin  
Asst. Superintendent Business Services

Attachments

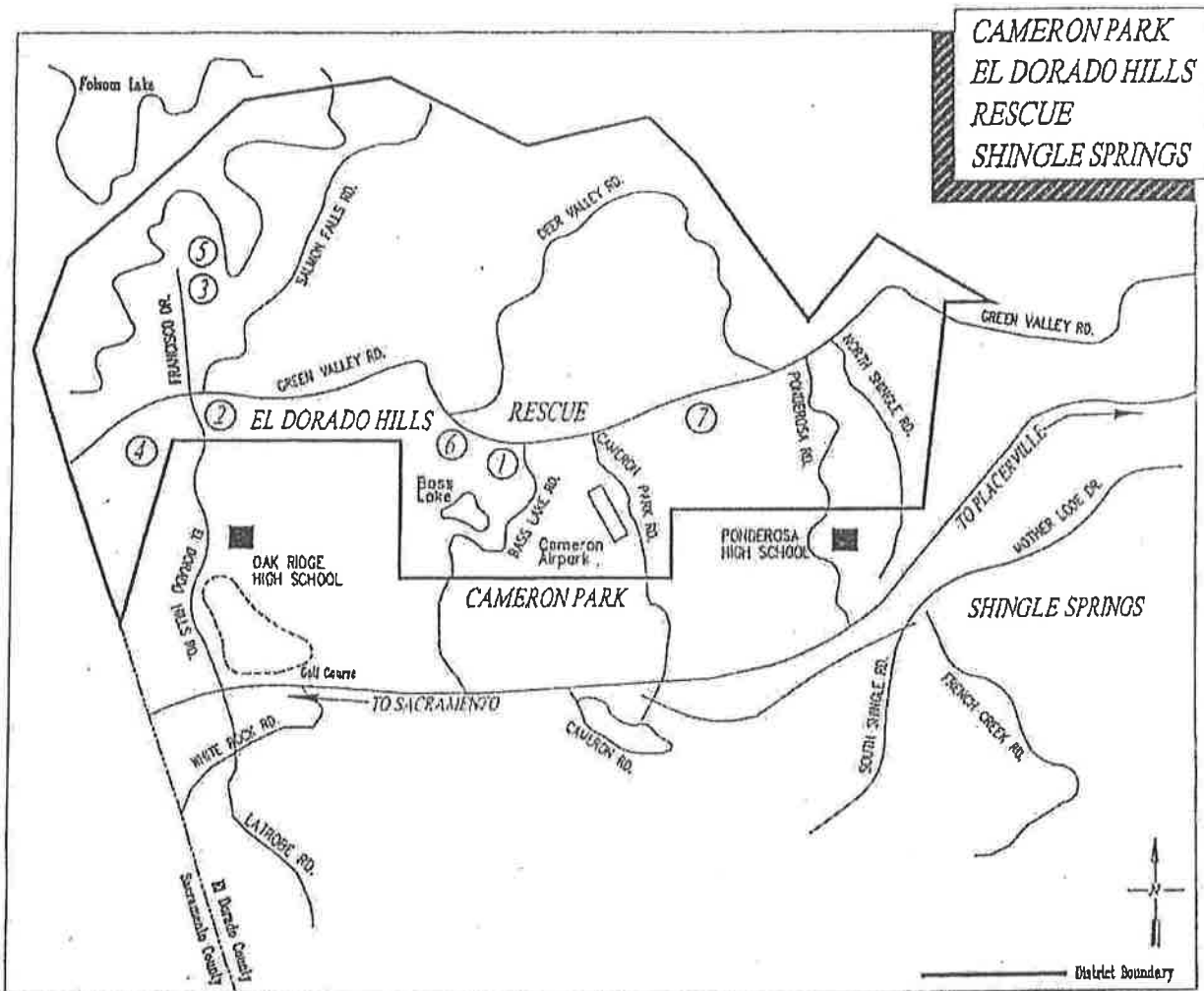
SM:cf 181ltr

Cheryl Olson, Superintendent

Board of Trustees

Nancy Brownell • Suzanna George • Stephanie Kent • Tagg Neal • Kim White

# MAP OF THE DISTRICT



① Green Valley Elementary (K-5)  
2390 Bass Lake Road  
Rescue, CA 95762  
(916) 933-3543

② Jackson Elementary (K-5)  
2561 Francisco Blvd.  
El Dorado Hills, CA 94762  
(916) 933-1828

③ Lake Forest Elementary (K-5)  
2240 Salisbury Drive  
El Dorado Hills, CA 95762  
(916) 933-0652

④ Lakeview Elementary (K-5)  
3371 Brittany Way  
El Dorado Hills, CA 95762  
(916) 941-2600

⑤ Marina Village Middle (6-8)  
1901 Francisco Drive  
Rescue, CA 95762  
(916) 933-3995

⑥ Pleasant Grove Middle (6-8)  
2540 Green Valley Road  
Rescue, CA 95762  
(530) 672-4400

⑦ Rescue Elementary (K-5)  
3880 Green Valley Road  
Rescue, CA 95762  
(530) 677-2720

**Table 2  
Projected Enrollment – Student Progression**

| Grade      | Actual<br>2017-<br>18 | Projected Enrollment - Straight Progression |             |             |             |             |             |             |             |             |             |
|------------|-----------------------|---|-------------|-------------|-------------|-------------|-------------|-------------|-------------|-------------|-------------|
|            |                       | 2018-<br>19                                 | 2019-<br>20 | 2020-<br>21 | 2021-<br>22 | 2022-<br>23 | 2023-<br>24 | 2024-<br>25 | 2025-<br>26 | 2026-<br>27 | 2027-<br>28 |
| K          | 419                   | 419   | 419         | 419         | 419         | 419         | 419         | 419         | 419         | 419         | 419         |
| 1          | 350                   | 324   | 324         | 324         | 324         | 324         | 324         | 324         | 324         | 324         | 324         |
| 2          | 338                   | 350   | 324         | 324         | 324         | 324         | 324         | 324         | 324         | 324         | 324         |
| 3          | 383                   | 338   | 350         | 324         | 324         | 324         | 324         | 324         | 324         | 324         | 324         |
| 4          | 382                   | 383   | 338         | 350         | 324         | 324         | 324         | 324         | 324         | 324         | 324         |
| 5          | 426                   | 382   | 383         | 338         | 350         | 324         | 324         | 324         | 324         | 324         | 324         |
| 6          | 441                   | 426   | 382         | 383         | 338         | 350         | 324         | 324         | 324         | 324         | 324         |
| 7          | 406                   | 441   | 426         | 382         | 383         | 338         | 350         | 324         | 324         | 324         | 324         |
| 8          | 480                   | 406   | 441         | 426         | 382         | 383         | 338         | 350         | 324         | 324         | 324         |
| Total K-5  | 2,298                 | 2,196                                       | 2,138       | 2,079       | 2,065       | 2,039       | 2,039       | 2,039       | 2,039       | 2,039       | 2,039       |
| Total 6-8  | 1,327                 | 1,273                                       | 1,249       | 1,191       | 1,103       | 1,071       | 1,012       | 998         | 972         | 972         | 972         |
| Total K-12 | 3,625                 | 3,469                                       | 3,387       | 3,270       | 3,168       | 3,110       | 3,051       | 3,037       | 3,011       | 3,011       | 3,011       |